



BETA THETA PI
— HOUSING —



THE BASIC CONCEPT

DEA GRANTS



IRS allows donations to the Beta Theta Pi Foundation to be routed to local house corporation for certain building projects and operational costs.

These funds can only be used for portions of the house deemed “educational” in nature.

THE BASICS

DEA GRANTS

501c(7) and (2): Chapters, House Corporations, Alumni Associations

- exempt from income tax
- Contributions are not tax-deductible for donors

501c(3): Beta Theta Pi Foundation

- Educational, charitable, social welfare
- Contributions are tax-deductible

DEA: Designated Educational Area

- Portions of the house used for educational purposes

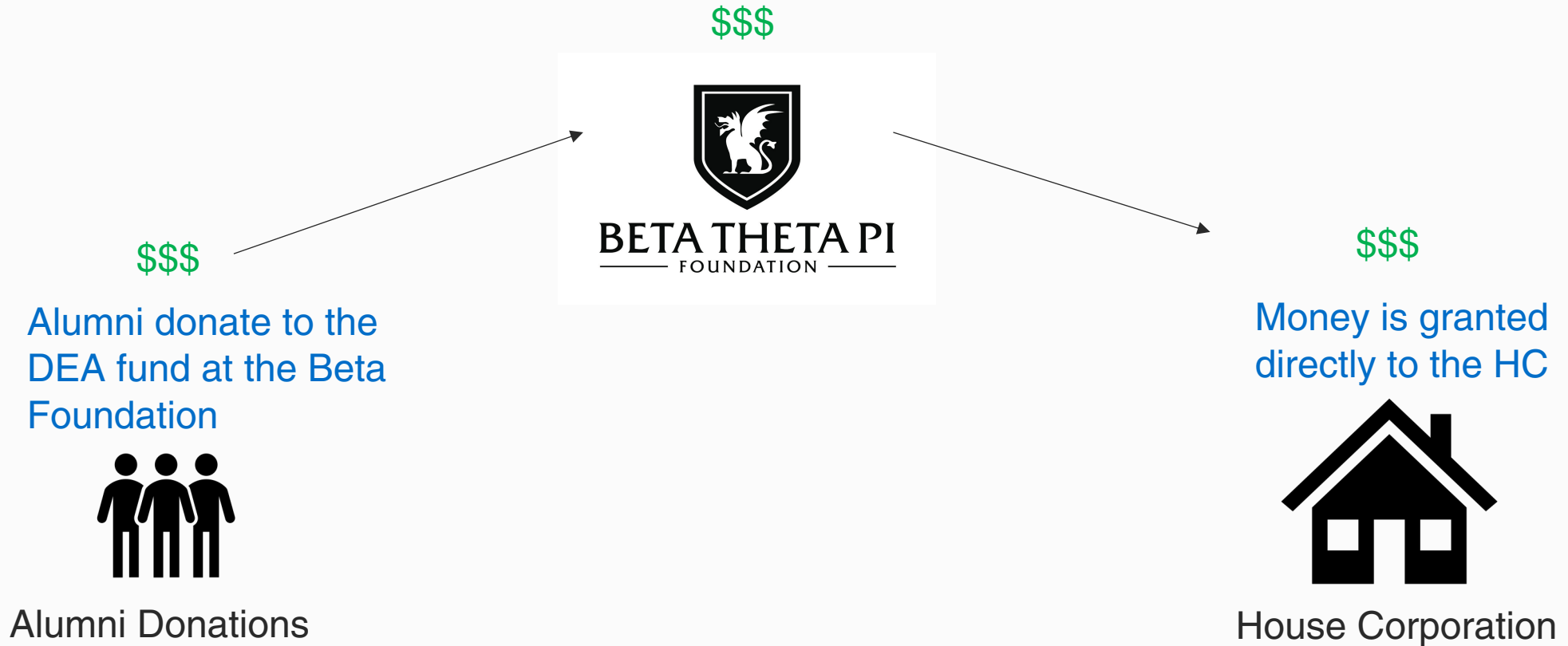
THE PROCESS

DEA GRANTS

1. Develop renovation / building plans
2. Determine total square feet devoted to “educational space”
 - Final result is total educational % for your facility
 - Averages 25 – 35%
3. Build campaign strategy
 - Donations to Foundation vs donations to house corporation.
 - Cash flow
4. Complete DEA application
 - Review by Housing Staff and approval by Beta Foundation
5. Reimburse house corporation from DEA grant for dollars spent on educational portions of the house
 - All funds are dispersed based on actual receipts / money spent

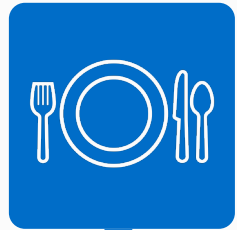
THE PROCESS

DEA GRANTS



THREE TYPES OF FLOOR SPACE

DEA GRANTS



Non-Educational

- Kitchen, dining room
- Chapter room
- Sleeping space



Educational

- Study
- Library
- Floor space in sleeping rooms allocated for desks



“Access” or support space for educational space

- Bathrooms
- Hallways and stairwells

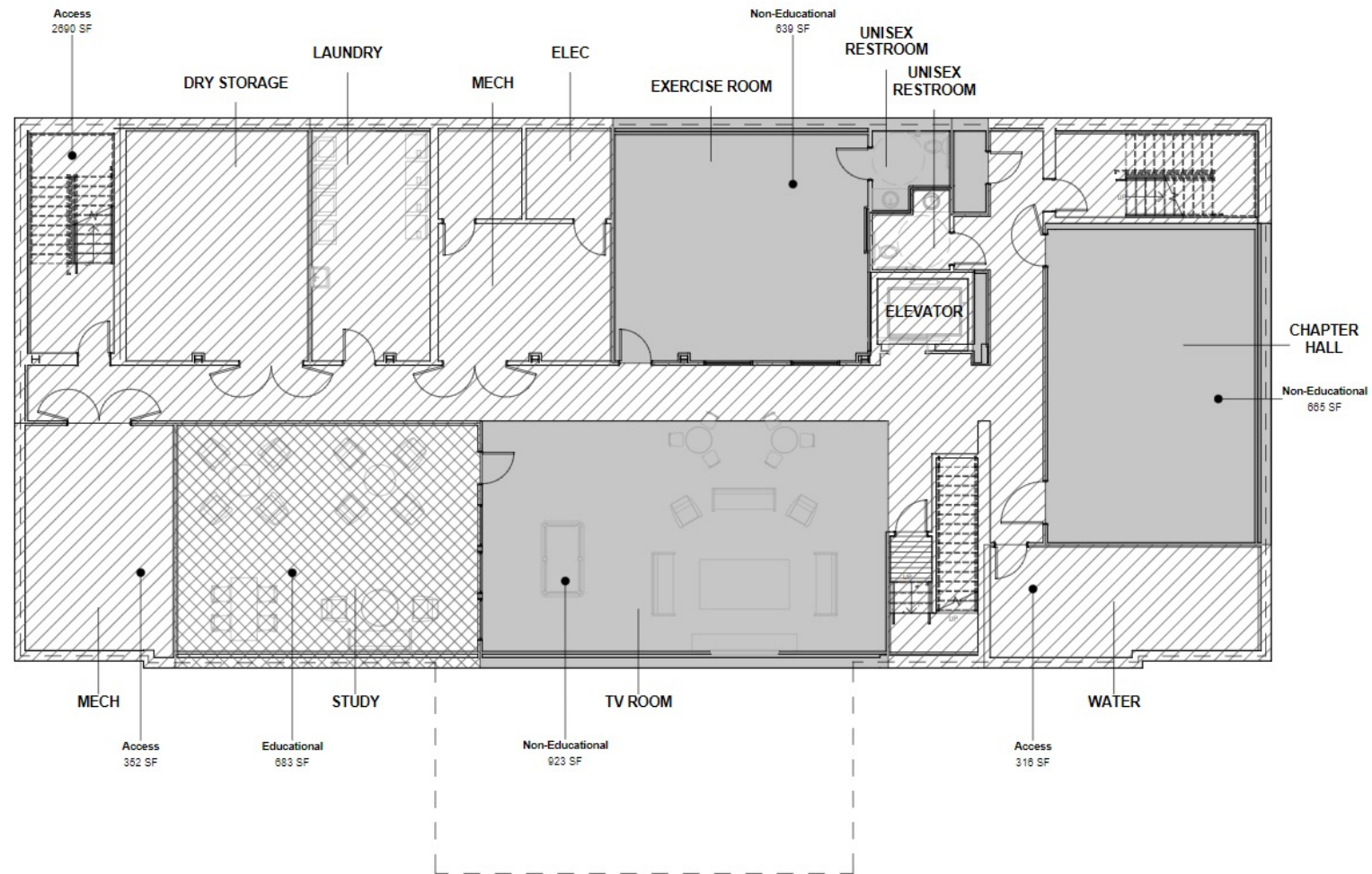
MAXIMIZING REVENUE

DEA GRANTS

$$\frac{\text{Educational SF}}{\text{Total SF minus Access SF}} = \text{DEA \%}$$

EXAMPLE FLOOR PLANS #1

DEA GRANTS



1

BASEMENT LEVEL FLOOR PLAN

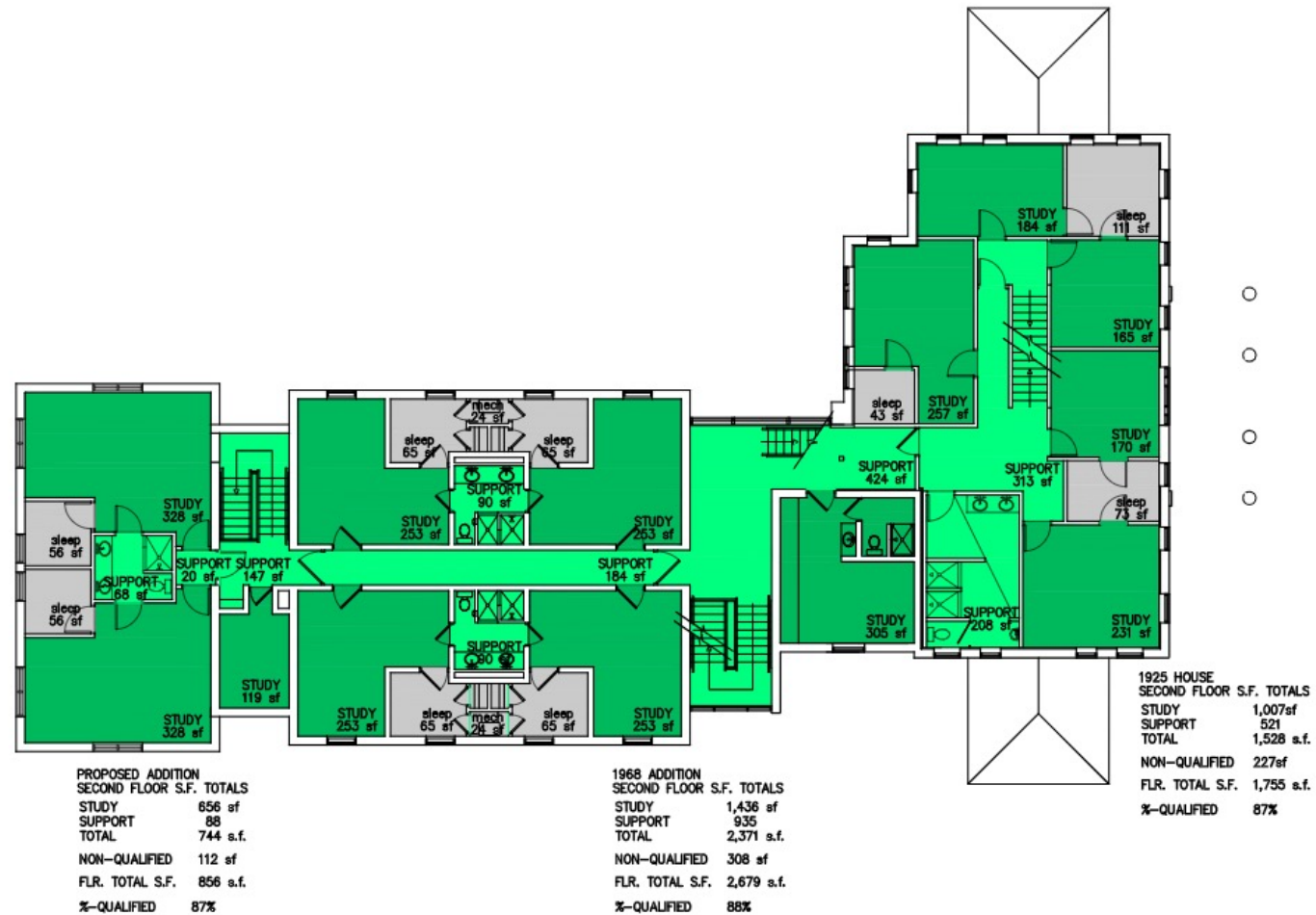
1/8" = 1'-0"



BETA THETA PI
— MEN OF PRINCIPLE —

EXAMPLE FLOOR PLANS #2

DEA GRANTS



EXAMPLE #1

DEA GRANTS

- Assume facility is deemed 35% educational
- Assume \$3 million campaign
 - \$1,050,000 can be raised through Beta Foundation
 - Balance donated directly to house corp.
- Donations and reimbursements can continue through regular campaign pledge period
 - Typically 3 – 5 years

EXAMPLE #2

DEA GRANTS

- Assume facility is deemed 35% educational
- Assume renovation is going to touch just the basement level
 - Study rooms; chapter room; bathrooms; laundry
 - We would calculate a “renovation percentage” and apply that instead
 - For this example: 50% of basement floor space is educational
- Assume \$250,000 campaign
 - \$125,000 can be raised through Beta Foundation
 - Balance donated directly to house corp.

TWO OTHER TYPES OF GRANTS

DEA GRANTS



Technology/Furniture

- After main application has been completed
- Notify the Housing Department
- Short application and accompanying receipts



Annual Operating

- Run annual fund campaign through DEA fund
- Reimburse house corporation for annual operating expenses to support educational space
- Example: 35% of annual operating expenses

GRANT APPLICATION

DEA GRANTS

- Lots of required paperwork
 - Work with Housing Department on floor plans to maximize every square foot
- Once approved, stays in place until material changes happen
- Serves as the basis for technology, furniture, and annual operating grants



CONTACT US: WE'RE HERE TO HELP!

HOUSING DEPARTMENT



JOHN.REINEKE@BETA.ORG



513.461.1320



COLIN.CLOSE@BETA.ORG



414.305.9857