



BETA THETA PI
— MEN OF PRINCIPLE —

GENERAL FRATERNITY OFFICER manual

revised: 03.2021

BETA THETA PI

navigating your general fraternity officer role

Position Impact

The mission of Beta Theta Pi is to develop men of principle for a principled life. General Fraternity Officers support that mission by helping local chapters and volunteers provide the best possible membership experience for today's undergraduates. They encourage self-governance; help members, officers and volunteers hold themselves and each other accountable to the values and Code of Beta Theta Pi; promote lifelong engagement with the Fraternity by recruiting, placing and training chapter advisors; and generally represent the General Fraternity to chapters, volunteers and alumni. The three primary General Fraternity Officers are regional, district, and assistant district chiefs.

Jump to:

Page 2	GFO Qualifications
Page 3	The Impact of Your Role
Page 4	GFO Orientation
Page 5	FAQs
Page 7	Beta Theta Pi Organization Chart
Page 8	Position Description: Regional Chief
Page 9	Position Description: District Chief
Page 10	Position Description: Assistant District Chief
Page 11	Advisor Recruitment
Page 12	Advisor Training
Page 13	Appointing and Removing Advisors
Page 14	Risk Management and Status Changes

GFO Qualifications

- Initiated member of Beta Theta Pi
- Fully embraces the mission, vision and core values of Beta Theta Pi
- Demonstrates a desire to continue learning how to support the organizational direction
- Demonstrates an ability to convey Beta Theta Pi's lofty purpose as an organization to others
- Demonstrates an ability to recruit, train and manage a team
- Demonstrates an ability to challenge the status quo while cultivating relationships with all constituencies
- Demonstrates an ability to collaboratively generate goals with all constituents
- Demonstrates communication skills on all platforms (interpersonal, large and small group, phone, email)
- Ability to respond to calls and emails in a timely manner
- Commitment to serve a three-year term (renewable on an annual basis thereafter)

THE IMPACT OF YOUR ROLE

personal and organizational benefits of service

General Fraternity Officer Constituencies

A primary role of a General Fraternity Officer is to represent the General Fraternity. Therefore, it is of the utmost importance to maintain open communication and positive relationships with the following individuals:

- Other General Fraternity Officers (GFOs), including the regional chiefs, district chiefs, assistant district chiefs, Board of Trustees and General Secretary
- Chapter operations specialists at the Administrative Office, who each provide direct support to 15-20 chapters, including regular engagement, campus visits and assessment
- Chapter services staff at the Administrative Office, including the director of chapter services, directors of chapter operations, director of growth, director of leadership and education, and other members of their team
- Advisory teams comprised of a minimum of five core advisors. The district chief and/or assistant district chief should be hosting monthly conference calls or meetings with advisory teams to provide ongoing training and support, collect key chapter updates, and discuss upcoming deadlines.
- The district chief and/or assistant district chief should be a resource during chapter conduct cases and a liaison between the General Fraternity and chapter leadership. GFOs should always focus on collaborating with local advisory teams during conduct situations.
- Local alumni association and/or housing corporation. The district chief and/or assistant district chief should communicate a minimum of once per term to provide updates and support, and to connect them to the Administrative Office staff, if needed.
- University administrators, specifically fraternity and sorority life staff. The district chief and/or assistant district chief should introduce himself to campus administrators and work collaboratively to provide and receive updates from university staff.

Benefits and Return on Personal Investment

Beta Theta Pi is a not-for-profit organization and its limited resources are always utilized with the membership's experience in mind. However, the Fraternity relies heavily on volunteer leadership to advance its purpose. Volunteers receive compensation in a number of ways.

PRACTICAL LEADERSHIP EXPERIENCE

- Responsibility for assessing organizational culture and developing change initiatives
- Ability to serve on focus groups and task forces to identify opportunities for organizational development
- Development and cultivation of skills in delegation and providing feedback to constituents within your respective region or district

PERSONAL DEVELOPMENT

- Development of personal relationships through the mentoring and coaching process
- Service-learning is an inseparable part of volunteering for Beta Theta Pi
- Programming involves a high level of self-discovery and values training and discussions

PROFESSIONAL DEVELOPMENT

- Networking with alumni and community members as an official representative
- Professional training focused on developing the tangible, operational volunteer skill set
- Opportunity to strengthen project management, communication and organizational skills

GFO ORIENTATION

Getting Started

1. Review this document with the chapter operations specialist and/or director of chapter operations. Ask questions, as necessary.
2. Establish a clear communication plan between yourself and the advisory team, regional chief, district chief, assistant district chief and chapter operations specialist.
3. Spend time becoming familiar with the resources available to volunteers on the [volunteer resources page](#) and [Lessonly](#). You will be a crucial part of this team, so it is essential you know what support and education is available.
4. Become familiar with all policies and standards of Beta Theta Pi. Experienced GFOs and Administrative Office staff, specifically the director of chapter operations or chapter operations specialist are resources to provide training and answer any questions you may have.
5. Introduce yourself to key constituents and plan to meet with them face-to-face within the month as a district or assistant district chief, and if applicable as a regional chief.
6. Make plans to attend [Leadership Summit](#), [Keystone](#) and the [General Convention](#).

Peer Insights

These tips were assembled from a survey of experienced GFOs. Please read them carefully.

- Enjoy the experience! Don't forget to take time to enjoy the relationships you form. These can be as strong or stronger than those you had during college. Establishing collaborative working relationships with your chapters, host academic institutions, advisory teams and General Fraternity representatives can be the most powerful thing you do. The stronger the working relationships you have, the more positive influence you can exert.
- Do not be afraid to make difficult decisions that will produce long-term success. Finding a healthy balance of challenging and supporting your chapters will be integral to the growth of your district. Chapters don't respond well to overbearing chiefs who rarely praise them, but at the same time all chapters need to be challenged to continually improve.
- Focus on building infrastructure. District chiefs and assistant district chiefs are not chapter advisors; rather, they assemble the advisory teams. After you have recruited advisors, send them to a Keystone Regional Leadership Conference or set up a training session with their chapter operations specialist or the director of chapter operations.
- Set short- and long-term goals you want to accomplish in your district or region. Possible goals include Convention attendance and awards for the district, promptness in reporting, recruitment numbers, etc.
- Encourage as many students as possible to attend Beta's hallmark leadership programs. Some of the most dramatic positive changes within our Fraternity have come from graduates of these experiences. Leadership programs also enable alumni to become involved by sponsoring attendees and acting as facilitators.
- Make our ritual the centerpiece of all your work with the chapter. It is the cornerstone of all Beta relationships. Further, to remain a credible leader you must always role model the Three Great Principles and Seven Obligations of our Fraternity when interacting with members and constituents.
- Evaluate yourself on a regular basis. As with any experience, you will grow and learn new things about yourself. Further, checking in occasionally will allow you to refocus your energy on the things that matter.
- Take time to understand the culture of each advisory team and chapter. It is necessary to understand that relationships are key when influencing change. Challenge should always be balanced with support, and it is important to understand the reality of what can be accomplished in a given time frame. Some items are urgent and important; others are important but not urgent. Prioritize accordingly.

FAQS

Where does my authority for making decisions originate?

Some of the powers of the General Secretary are delegated to district or regional chiefs to enforce The Code and policies of Beta Theta Pi. The General Secretary ultimately reports to the General Convention through the Board of Trustees. It is necessary that district chiefs become familiar with the chapter status/sanctions section of The Code and policies of Beta Theta Pi. There is a reference page from [The Code](#) included later in this manual. The Administrative Office staff is always available to provide clarification and support to General Fraternity Officers when making decisions and can be reached via email or phone.

What is my role in the General Convention?

In addition to being required to attend all business sessions of the General Convention, district and regional chiefs are assigned to a legislative committee where they serve as an advisor to the collegiate members. A complete guide is provided each year in the registration materials, and an agenda is available to chiefs upon arrival.

How do I get a list of phone numbers for the advisors in my district?

Contact information can be found on [MyBeta](#). Using the “Chapters” list, chiefs can access a chapter’s information, including membership rosters, officers, volunteers, reports, etc. Many reports can be quickly viewed or downloaded.

What reports are my chapters responsible for during the year?

Chapters must submit various reports throughout the year, generally via our website. Using [MyBeta](#), you can identify online reports that have been submitted or are still due. Forms are posted on the website 60 days prior to their due date. Submitting reports in a timely fashion may affect a chapter’s eligibility for award recognition. Many important reporting deadlines can also be found in this [Year in the Life](#) document.

What should my relationship be with the chapter operations specialist for my district?

With their extensive training, chapter operations specialists can conduct accurate chapter assessments, lead a wide variety of educational programs, help train advisors, provide support for advisor recruitment and make recommendations for improving advisor and chapter performance. Chapter operations specialists do not sanction or police chapters. Their role is that of coaches and mentors. It is important that district chiefs work closely with them through regular visits, emails and phone calls to discuss chapters and advisors in the district. Please submit an evaluation form for your chapter operations specialist after they complete visits to your chapters. Ideas and feedback are welcome.

What are the current priorities of Beta Theta Pi?

Brotherhood, Personal Growth, and Home. Beta Theta Pi announced a new Strategic Plan in 2018, which is [outlined here](#).

What are the Wooden Institute for Men of Principle, Undergraduate Interfraternity Institute, Nichols Chapter Presidents Leadership Academy and the Keystone Regional Leadership Conference?

These programs are educational opportunities that challenge our undergraduates to make values-based leadership decisions. Some programs are offered only to Betas, while others involve Greeks of all councils. These experiences are the best way we know to train our undergraduates to be credible leaders in their chapters. We highly recommend your chapters send students to these experiences. More information and registration forms may be found in the [programs section](#) of Beta’s website.

How am I protected as an officer of the Fraternity?

All General Fraternity volunteers are covered under our comprehensive liability insurance program. The insurance program covers you in all cases other than direct participation in actions that violate federal, state/provincial, and/or local laws or policies of Beta Theta Pi. In other words, there is no need to worry if you are following the law and General Fraternity policies.

FAQS (CONT.)

How do I recruit advisors?

It is recommended you speak to your chapter officers and chapter operations specialist. The Administrative Office can provide lists of alumni living in specific geographic areas, those who support the Beta Theta Pi Foundation and those who have previously held office. Local alumni on housing corporations or who are already involved may have good leads, as well. We have also had considerable success recruiting advisors who are not members of our Fraternity and can often provide objective insights to the chapter and alumni. We call these supporters Friends of Beta (FOB). You can find additional resources on the [Beta website](#).

How do I train advisors?

The General Fraternity offers many ways to train advisors. Chapter operations specialists can provide on-site training for advisory teams in need of specific direction. In addition, all advisors are strongly encouraged to attend the Keystone Regional Leadership Conference annually. Finally, resource materials are available for advisors in the [advisory team](#) section of the website.

How do I balance the responsibility of policy enforcement with conceptual chapter self-governance?

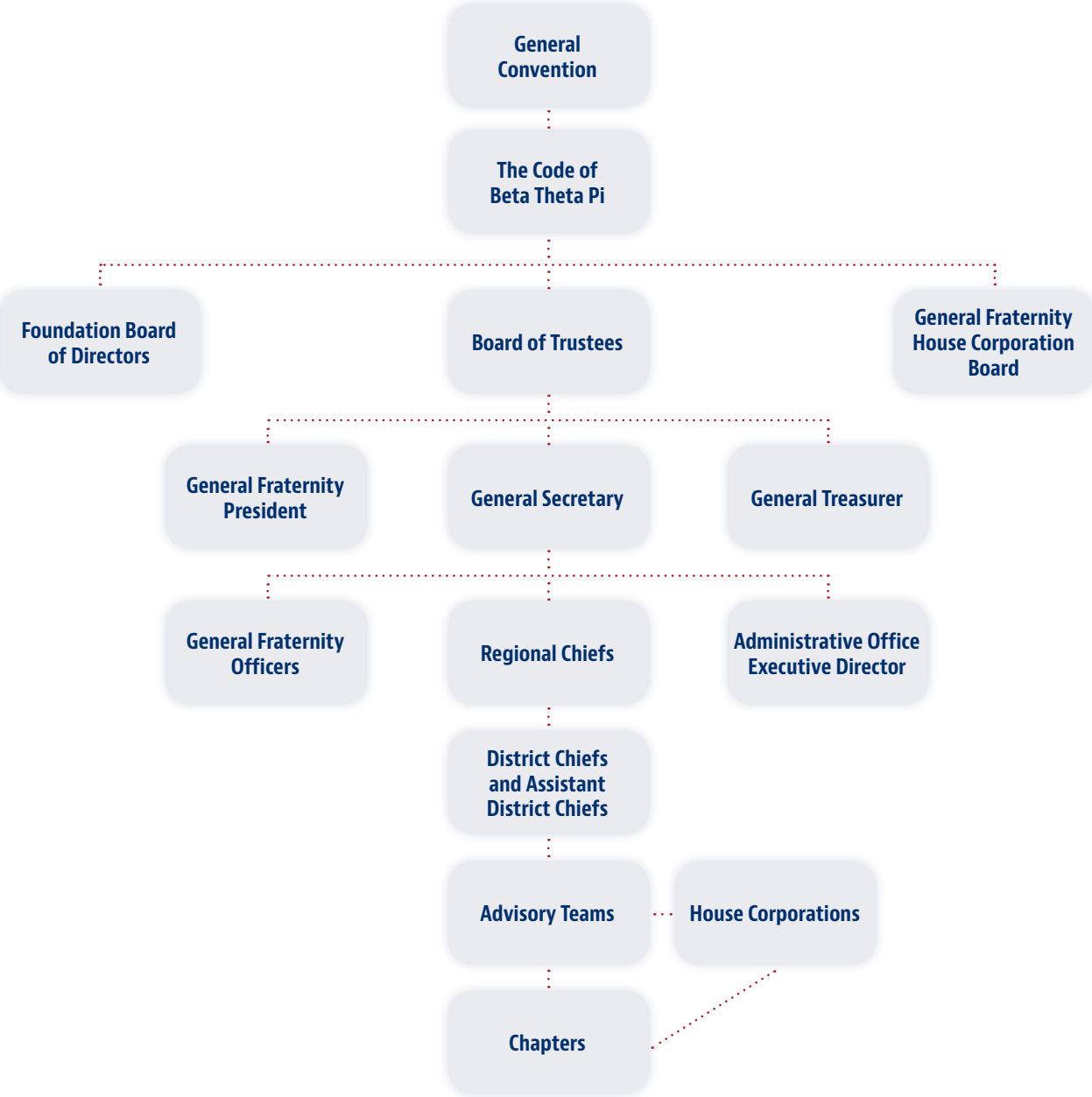
Beta Theta Pi believes strongly in a system of chapter self-governance. However, the district chief has a responsibility to ensure [The Code](#) and policies of Beta Theta Pi are being followed. It is always a good idea to consult someone from the Administrative Office or your regional chief before taking action. Further, always consult chapter advisors before moving ahead as their involvement is critical for long-term change and success. Your relationship with them is one of your most powerful tools for positive change.

To whom do I report?

District chiefs typically work with the Administrative Office staff and the regional chief when dealing with day-to-day activities. The Fraternity's lead volunteer, the General Secretary, is brought in to handle major issues. A visual representation of Beta's organizational hierarchy can be found below. Primary staff contacts include the chapter operations specialist, your director of chapter operations or the director of chapter services.

ORGANIZATIONAL STRUCTURE

beta theta pi general fraternity



REGIONAL CHIEF

position description

Job Summary

The regional chief is a top-level, regional volunteer who oversees the recruitment, performance and support of all the volunteers within a region. His direct responsibilities relate to the recruitment, placement and coaching of district chiefs within his region as well as the high-level chapter accountability issues within the region. The regional chief reports directly to and will be evaluated by the General Secretary. He will also form strong working relationships with the chapter services staff, particularly the chapter operations specialist assigned to his region.

Role Expectations

The regional chief's duties include:

- Recruit and train highly qualified district chiefs
- Provide ongoing coaching to district chiefs regarding their performance
- Ensure there is proactive succession planning and training for all volunteers in the region
- Provide recommendations to the General Secretary on all chapter status changes of suspension or greater
- Serve as a Fraternity ambassador at key regional events (installations, anniversaries, etc.)
- Serve a term of three years with the possibility of renewal at the end of each term
- Attend the [General Convention](#) annually
- Attend the [Keystone Regional Leadership Conference](#) for the region annually
- Attend the [Leadership Summit](#) for all General Fraternity Officers each January
- Perform chapter visits within the region, as needed
- Monitor the progress of your chapters, including reviewing chapter visit reports, SCOE reports, CPLA Priority Plans, Keystone Priority Plans, Colony Momentum Maps, and Summer Support Plans. All GFOs should develop a method of tracking chapter, district and region progress on initiatives over time to identify key areas for growth.

Indicators of Success

- All districts have a trained and appointed district chief and a potential assistant district chief, if needed
- No district chief vacancies exceeding 90 days
- The regional chief is cultivating future district chief candidate through succession planning
- The regional chief communicates regularly with his DCs and provides coaching and feedback to ensure the DC is placing trained advisors and holding chapters accountable

Preferred Qualifications

- Strong knowledge and understanding of the Fraternity's mission, vision, core values and strategic priorities
- Experience providing performance feedback through coaching and mentoring
- Ability to identify and recruit top-level volunteers for the Fraternity
- A history of success as a district chief

DISTRICT CHIEF

position description

Job Summary

The district chief is a volunteer who oversees the recruitment, performance and support of all chapter advisors within a district. His direct responsibilities relate to the recruitment, placement and coaching of the chapter counselors and other advisors within his district, as well as management of low- to mid-level chapter accountability issues. The district chief reports directly to and will be evaluated by the regional chief. He will also form strong working relationships with the chapter services staff, particularly the chapter operations specialist assigned to his district.

Role Expectations

The district chief's duties include:

- Recruit and train highly qualified advisors for each chapter within the district
- Provide ongoing coaching to chapter counselors regarding their performance
- Ensure there is proactive succession planning and training for all volunteers in the region
- Provide recommendations to the regional chief on all chapter status changes
- Serve as a Fraternity ambassador at key district events (installations, anniversaries, etc.)
- Serve a term of three years with the possibility of renewal at the end of each term
- Attend the [General Convention](#) annually
- Attend the [Keystone Regional Leadership Conference](#) for the region annually
- Attend the [Leadership Summit](#) for all General Fraternity Officers each January
- Ongoing volunteer recruitment or chapter visitation within district, as needed
- Communicate regularly with the district's chapter counselors and provide coaching and feedback to ensure chapters have trained advisors that are holding them accountable
- Perform chapter visits within the district, as needed
- Monitor the progress of chapters, including looking at the chapter visit reports, SCOE reports, CPLA Priority Plans, Keystone Priority Plans, Colony Momentum Maps, and Summer Support Plans. All GFOs should develop a method of tracking chapter, district and region progress on initiatives over time to identify key areas for growth.

Indicators of Success

- All chapters have a trained and engaged five-person core advisory team
- No advisor vacancies exceeding 90 days
- A volunteer tracker is maintained for the district to facilitate successful volunteer transitions
- The district chief is cultivating future DC candidates through succession planning

Preferred Qualifications

- Strong knowledge and understanding of the Fraternity's mission, vision, core values and strategic priorities
- Experience providing performance feedback through coaching and mentoring
- Ability to identify and recruit top-level volunteers for the Fraternity
- A history of success as a volunteer

ASSISTANT DISTRICT CHIEF

position description

Job Summary

The assistant district chief is a volunteer who oversees the recruitment, performance and support of specific chapter advisors within a district. His direct responsibilities relate to the recruitment, placement and coaching of chapter counselors and advisors within his assigned chapters, as well as the management of low- to mid-level chapter accountability issues. The assistant district chief reports directly to and will be evaluated by the district chief. He will also form strong working relationships with the chapter services staff, particularly the chapter operations specialist assigned to his district.

Role Expectations

The assistant district chief's duties include:

- Recruit and train highly qualified chapter advisors for each assigned chapter within the district
- Provide ongoing coaching to chapter counselors regarding their performance
- Ensure there is proactive succession planning and training for all volunteers in assigned chapters
- Provide recommendations to the district chief on all chapter status changes
- Serve as a Fraternity ambassador at key district events (installations, anniversaries, etc.)
- Serve a term of three years with the possibility of renewal at the end of each term
- Attend the [General Convention](#) annually
- Attend the [Keystone Regional Leadership Conference](#) for the region annually
- Attend the [Leadership Summit](#) for all General Fraternity Officers each January
- Ongoing volunteer recruitment or chapter visitation within district, as needed
- Perform chapter visits in the district, as needed
- Communicate regularly with chapter counselors and provide coaching and feedback to ensure chapters have trained advisors that are holding them accountable
- Monitor the progress of assigned chapters, including looking at the chapter visit reports, SCOE reports, CPLA Priority Plans, Keystone Priority Plans, Colony Momentum Maps, and Summer Support Plans. All GFOs should develop a method of tracking chapter, district and region progress on initiatives over time to identify key areas for growth.

Indicators of Success

- All chapters have a trained and engaged five-person core advisory team.
- No advisor vacancies exceeding 90 days
- The assistant district chief is cultivating future ADC candidates through succession planning
- A volunteer tracker is maintained for the district to facilitate successful volunteer transitions

Preferred Qualifications

- Strong knowledge and understanding of the Fraternity's mission, vision, core values and strategic priorities
- Experience providing performance feedback through coaching and mentoring
- Ability to identify and recruit top-level volunteers for the Fraternity
- A history of success as a volunteer

ADVISOR RECRUITMENT

Lead Generation

Using our knowledge of what an ideal volunteer looks like, we need to find the people that are right for the position. Some effective methods to find potential advisor are:

- Asking current volunteers for other Betas, friends, colleagues, spouses, etc.
- Reaching out to the Greek life advisor at the school
- Working with the chapter operations specialist to generate a list of university staff members to reach out to as potential Friends of Beta
- Maintaining an updated tracker of volunteer leads to facilitate easier replacements
- Looking at the Beta Theta Pi Foundation Annual Report for a list of recent donors
- As a last resort, taking an area alumni poll (can be provided by an Administrative Office staff member)

Beta has many volunteers who live five or more hours away from the chapter they advise and still visit regularly. Just because someone is far away doesn't mean you can't ask!

Succession Planning is key for filling advisor vacancies in a timely and effective manner.

Utilize this [Advisor recruitment email template](#) when making outreach to potential advisors.



ADVISOR TRAINING

advisory team expectations

Position Impact

As Beta Theta Pi's standards increase, so does its need for talented and involved individuals to provide support at the local level. Advisors enter a collaborative relationship with many constituencies to provide direction and consistency in operation between elected leaders. S/he makes it possible to challenge the status quo while supporting progress by building relationships and fostering trust.

The Advisor's Role

The role of a chapter advisor is an important and difficult one to fill. Serving the chapter's needs and welfare successfully requires many skills. Volunteers can find educational and operational resources on [Beta's website](#) and the Fraternity's online education platform, [Lessonly](#). Certain suggestions seem pertinent across the spectrum regardless of the specific role each person plays on the team:

- **The goal of the advisor is to help the chapter and individual members become maturely self-directed.** The advisor should continually promote improvement using self-study, evaluation and reconsideration of present policies in relation to the individual, university and General Fraternity, as well as the demands of the institution, alumni and public.
- **The relationship of the advisor to a chapter is that of a coach to a team.** At times, the advisor must expect student errors and hope to make them instructive for individuals and the group. The advisor should use a positive approach, offering criticism carefully and tactfully. Perfection cannot always be demanded, and praise for commendable performance is important.
- **The advisor must be a good role model for the chapter in action and example.** The advisor should follow suggestions or directions from the General Secretary, regional chief, district chief, Administrative Office and the academic institution. S/he should keep in close contact with the chief and be completely informed.
- **The advisor must become familiar with and interested in the members as individuals, as well as a group.** The advisor must make it easy for the chapter officers and members to contact him/her about group and individual matters.

General Expectations

While the chapter counselor and district chief are responsible for ensuring that individual team members feel skilled and capable of advising in their respective positions, there are some common characteristics shared among the most successful of advisory teams in Beta Theta Pi. It is expected, therefore, that the advisory team adopt the following at a minimum and report progress on each item to the district chief each month:

- **The advisory team will plan quarterly meetings to review chapter progress.** The chapter counselor should lead the charge in scheduling these meetings; however, attendance is expected from all members of the team.
- **The advisory team will meet, as a whole, with the chapter's executive committee twice each year.** These meetings can double as one of the quarterly advisory team meetings and should focus on building a "strategic plan" detailing how to continue moving the chapter forward toward reaching a set of mutually agreeable goals.
- **A schedule will be set at the beginning of each semester outlining advisor attendance at chapter functions.** While it is not expected that each advisor attends every chapter function, there should be an advisor presence at all chapter and executive committee meetings and a number of events throughout the year. At a minimum, team members should expect to attend at least two chapter meetings and two executive committee meetings each semester.
- **Individual advisors will maintain weekly contact with their advisee.** This contact could be made in the form of a weekly one-on-one meeting, phone call or brief email exchange. Doing this will build the relationship between the advisor and the student in a way that allows them to become both a friend and a mentor.
- **Advisors will attend the Keystone Regional Leadership Conference every two years.** Attending the conference will allow the advisor to experience position-specific training with his/her respective officer as well as time with the chapter's new leadership team when they are setting goals for the year. At a minimum, it is expected that at least one member of the advisory team attends Keystone annually.
- **A General Fraternity representative will provide training to new advisory team members within a reasonable time.** Whether this comes from the district chief, regional chief or a staff representative, team members can only be effective if they are acutely aware of their responsibilities and are set up for success from the beginning.

APPOINTING ADVISORS

Appointing and Deappointing Advisors

Identifying and recruiting talented advisors for local chapter support is the most important thing you can do to create long lasting and positive organizational change. To be sure, managing a five-person, capable and involved advisory team at each chapter is your top priority.

Chapter operations specialists and the director of chapter operations are key resources available to help brainstorm recruitment strategies. Further, it is essential that an advisor begins to develop a relationship with the General Fraternity immediately upon agreeing to serve as a local volunteer. Therefore, once you have identified and recruited an advisor, complete these simple steps to get them connected to the chapter operations specialist, a monthly advisor enewsletter and ensure they receive a welcome message with resources.

Steps to appointing advisors

1. Log into [MyBeta](#). If you do not remember your login information or are creating a new account, please call the Administrative Office at 800.800.BETA (2382).
2. Click on the “Chapters” tab near the top of page.
3. Select the chapter you are appointing, changing or removing advisors for utilizing either the interactive map or the alphabetical drop down menu.
4. Hover over “Reporting” near the top, then “Officers/Advisors,” then select “Update Advisors/House Corp.”
5. Ensure you are on the correct chapter page, then at the top of the page you can appoint new advisors. Select the role you are appointing, the start date for that advisor, and enter their email.
 - a. If the email address is valid, additional contact information for the individual will populate. If the contact information is correct, finish by clicking “Appoint.”
 - i. If the additional information is not correct, click the link to provide updated information to the Administrative Office.
 - ii. You will be prompted to provide updated information and a message will be sent for the profile to be updated.
 - iii. You will be contacted by the director of chapter operations or your chapter operations specialist if further information is needed.
 - iv. Generally, however, the information you provided will result in an official appointment and notification within two or three days.
 - b. If you clicked “Appoint,” you will be notified that the appointment was a success and the newly appointed advisor’s name and role will appear at the bottom of the page.
 - c. If you selected a date in the future for the start date, the name will not appear until that date.

Steps to deappoint advisors

1. Below the appointing section you’ll find the current advisors and house corporation officers.
2. You can use this box to deappoint advisors. Select the bubble for the advisor you are removing, the reason they are leaving the team and enter their end date. Below that select “End Term for Selected Volunteers.”
3. From there, confirm that the advisor is to be removed, and double check the roster if the change was supposed to occur immediately.

RISK MANAGEMENT AND STATUS CHANGES

Handling Risk Management Incidents

When you become aware of a risk management incident/violation, follow these steps:

1. Contact the director of chapter operations and chapter counselor immediately.
2. Inform chapter officials they must submit an [incident report](#) to the Administrative Office within 24 hours and refer them to the [resources](#) on the website. **You need to know the [crisis management plan](#) as well.** Further, they are not to speak with the media and all media inquiries should be referred to Director of Media Relations [Justin Warren](#) at the Administrative Office. The president or risk manager should be responsible for submitting the actual report, but the GFO should actively encourage advisors and chapter leadership to facilitate this process.
3. Once the report has been filed, you will be contacted by the director of chapter operations with further instructions depending upon the nature and severity of the incident.

Chapter Status (From The Code of Beta Theta Pi)

SECTION 2. *Status of Chapters:*

A. Categories: A chapter of Beta Theta Pi will be designated as either:

- a. In Good Standing;
- b. On Probation;
- c. Subject to Suspension
- d. Suspended;
- e. Under Reorganization;
- f. Disbanded; or
- g. Revoked.

A chapter may be designated as any status without having first received another designation, subject only to any limitations set forth elsewhere in the Constitution or Laws.

B. Definitions:

a. Chapter Operates Under Own Authority

(1) *Definition of a Chapter in Good Standing:* A chapter is in good standing if (1) it has paid or has arranged to pay all money owed by it to the General Fraternity, and (2) it has not been given a different status designation.

b. Chapter Operates Under Own Authority with Limitations. Statuses in this section allow a chapter to operate as a chapter of Beta Theta Pi under its own charter, but with such restrictions, limitations or conditions as might be imposed by the party making the designation. The letter changing the designation shall list the deficiencies the chapter needs to correct and a timetable for correction. The letter shall also state the chapter is on notice more serious action may be taken if not corrected:

(1) *Definition of a Chapter On Probation:* A chapter placed on probation is (1) a chapter that has failed to meet or has had difficulty meeting the standards of a chapter of Beta Theta Pi, and (2) has been placed on probation by the General Secretary, the Board of Trustees or the General Convention.

- (2) *Definition of a Chapter Subject to Suspension:* A chapter designated as being subject to suspension is (1) a chapter that has failed to meet the standards of a chapter of Beta Theta Pi, (2) has been designated as subject to suspension by the General Secretary, the Board of Trustees or the General Convention, and (3) is determined, by the party making the designation, to have extremely serious deficiencies which threaten its ability to continue as a functioning chapter of Beta Theta Pi.
- c. Chapter Has No Authority to Operate Except as Allowed. Statutes in this section provide a chapter no inherent authority to operate as a chapter of Beta Theta Pi except for authority specifically granted by the party making the designation:
- (1) *Definition of a Suspended Chapter:* A suspended chapter is a chapter the charter of which has been suspended by the General Secretary, the Board of Trustees or the General Convention.
- (2) *Definition of a Chapter Under Reorganization:* A chapter under reorganization is one which is being reorganized under the order of the General Secretary, the Board of Trustees or the General Convention to determine which members are willing to follow the standards and principles of Beta Theta Pi. The charter of a chapter Under Reorganization shall, by virtue of such designation, be suspended. As a part of the reorganization some Collegiate Members may be designated as Alumnus Members under Chapter VIII, Section 1, Part B(a)(iii) and other disciplinary action may be taken with respect to members as provided in the Laws.
- d. Chapter Has No Authority to Operate. Statutes in this section provide a chapter may not operate as a chapter of Beta Theta Pi for any purpose and is not a chapter of the Fraternity:
- (1) *Definition of a Disbanded Chapter:* A disbanded chapter is one (1) the charter of which has been suspended and (2) the members of which have been ordered to disband. Said members shall be designated as Alumnus Members under Chapter VIII, Section 1, Part B(a)(iii), although other disciplinary or superseding action may be taken with respect to the members as provided in the Laws.
- (2) *Definition of a Revoked Chapter:* A revoked chapter is one that once existed but does not now exist because its charter was rescinded by the General Convention under the provisions of this Code. A revoked charter is not in the keeping of the Board of Trustees and the chapter designation is forfeit.
- C. *Who May Suspend, Reorganize, or Disband a Chapter:* The charter of any chapter may be suspended, the chapter may be ordered reorganized, or the chapter ordered disbanded by the General Secretary, the Board of Trustees, or by a 2/3 vote of the General Convention. The General Secretary may delegate to a District Chief the power to suspend the charter of a chapter in his district and shall review and may modify or reverse any action taken by a District Chief under this delegation of authority.
- D. *Who May Modify or Lift Designation:* A change in designation of a chapter may be appealed to the body modifying the designation or any higher body. If the appeal is denied the chapter may continue to appeal to higher authorities up to the General Convention. The General Convention supersedes the Board of Trustees. The Board of Trustees supersedes the General Secretary or District Chief.
- a. Appeals to the General Convention for a chapter's designation as suspended, under reorganization, or disbanded may be lifted by a two-thirds vote of the General Convention.
- b. The General Secretary, Board of Trustees, or General Convention when designating or modifying a chapter status may also provide that a chapter's designation be automatically modified or lifted if certain conditions are met and may specify who would make that determination.
- E. *Notice to Interested Parties of Certain Chapter Designations:* If a chapter's status is changed, notice of such change, the reasons, and notice more serious action may be taken if the deficiencies are not corrected shall be promptly sent by the Administrative Office to the parents of the Collegiate Members of the chapter, the chapter's advisors, the officers of the chapter's house corporation and such living alumni of the chapter as determined appropriate by the Board of Trustees. Notice may also be given to other parties of a chapter's designation as deemed appropriate under the circumstances.

- F. *Procedure for the Disbanding of Chapters:* The General Secretary or Board of Trustees shall designate discreet persons to work with the officers of the chapter's alumni and/or house corporation to carry out the details of disbanding a chapter, including obtaining the property of the General Fraternity, relocating of residents of the chapter house, and securing the chapter house.
- G. *Revocation of Charter:* The General Convention may revoke the charter of any chapter by a three-fourths vote. If the action is being taken at the recommendation of the Board of Trustees, the Chapter must have first received written notice of the recommendation.

The Bridge Builder

An old man going a lone highway
Came in the evening, cold and gray,
To a chasm vast, both deep and wide.
Through which was flowing a sullen tide.
The old man crossed in the twilight dim;
The swollen stream was as naught to him;
But he stopped when safe on the farther side
And built a bridge to span the tide.

“Old man,” said a fellow pilgrim near,
“You are wasting your strength in labor here;
Your journey will end with the closing day,
You never again will pass this way.
You’ve crossed the chasm deep and wide
Why build you this bridge at eventide?”

The laborer lifted his old gray head,
“Good friend, in the path I have come,” he
said, “There followeth after me today
A youth whose feet must pass this way.
This chasm which has been naught to me
To that young man may a pitfall be.
He, too, must cross in the twilight dim.
Good friend, I am building this bridge for him.”

— *Miss Will Allen Dromgoole*